



GLOBAL PLATFORM FOR  
DISASTER RISK REDUCTION



INDONESIA  
2022

## From Risk to Resilience:

Towards Sustainable Development for  
All in a COVID-19 Transformed World

# Seventh Session

Bali, Indonesia,  
23-28 May  
2022



# INFORMATION NOTE FOR PARTICIPANTS

Convened and organized by



## UNDRR

UN Office for Disaster Risk Reduction

Hosted by the  
Government of Indonesia





# 2022 Global Platform for Disaster Risk Reduction

The Global Platform for Disaster Risk Reduction is a global multi-stakeholder forum focused on reducing disaster risk and increasing the resilience of communities. The seventh session of the Global Platform for Disaster Risk Reduction (GP2022) will take place from 23 to 28 May 2022, in Bali, Indonesia. It is convened and organized by the United Nations Office for Disaster Risk Reduction (UNDRR) and hosted by the Government of Indonesia. The event will be co-chaired by the Government of Indonesia and UNDRR.

Embodying the all-of-society approach, the Global Platform for Disaster Risk Reduction is an inclusive and accessible multi-stakeholder platform. It plays a crucial role in mobilizing – and fostering collaboration among – governments, stakeholders, and the UN system to accelerate the implementation of the Sendai Framework for Disaster Risk Reduction.

The overall theme of GP2022, *From Risk to Resilience: Towards Sustainable Development for All in a COVID-19 Transformed World*, will focus on how the COVID-19 pandemic has challenged the traditional understanding of risk and disaster risk governance. GP2022 will provide a unique and timely opportunity to showcase the importance of international solidarity and cooperation, as well as to discuss ways to tackle underlying risk drivers, locally and globally, strengthen disaster risk governance, and to recommit with urgency to accelerate progress towards the reduction of disaster risk and achievements of the Sustainable Development Goals.





# Venues

GP2022 will take place at the Bali Nusa Dua Convention Center (BNDCC) and at the Bali International Convention Centre (BICC) in Bali, Indonesia. Both conference facilities are located in the Nusa Dua area, about 10 kilometers away from the Bali Ngurah Rai International Airport, also known as Denpasar International Airport, and around 10 minutes from the exit of Bali Mandara highway.

## Address and Contact details:

### Bali Nusa Dua Convention Center (BNDCC)

Kawasan Terpadu ITDC NW/1  
Nusa Dua, Bali 80363  
Indonesia

Telephone: +62.361.773000

E-mail address: [events@baliconventioncenter.com](mailto:events@baliconventioncenter.com)

[www.baliconventioncenter.com](http://www.baliconventioncenter.com)

### Bali International Convention Centre (BICC)

Kawasan Pariwisata Nusa Dua  
BTDC Lot N-3  
Nusa Dua, Bali 80363  
Indonesia

Telephone: +62.361.771906

E-mail address: [bicc.bali@westin.com](mailto:bicc.bali@westin.com)

[www.baliconvention.com](http://www.baliconvention.com)



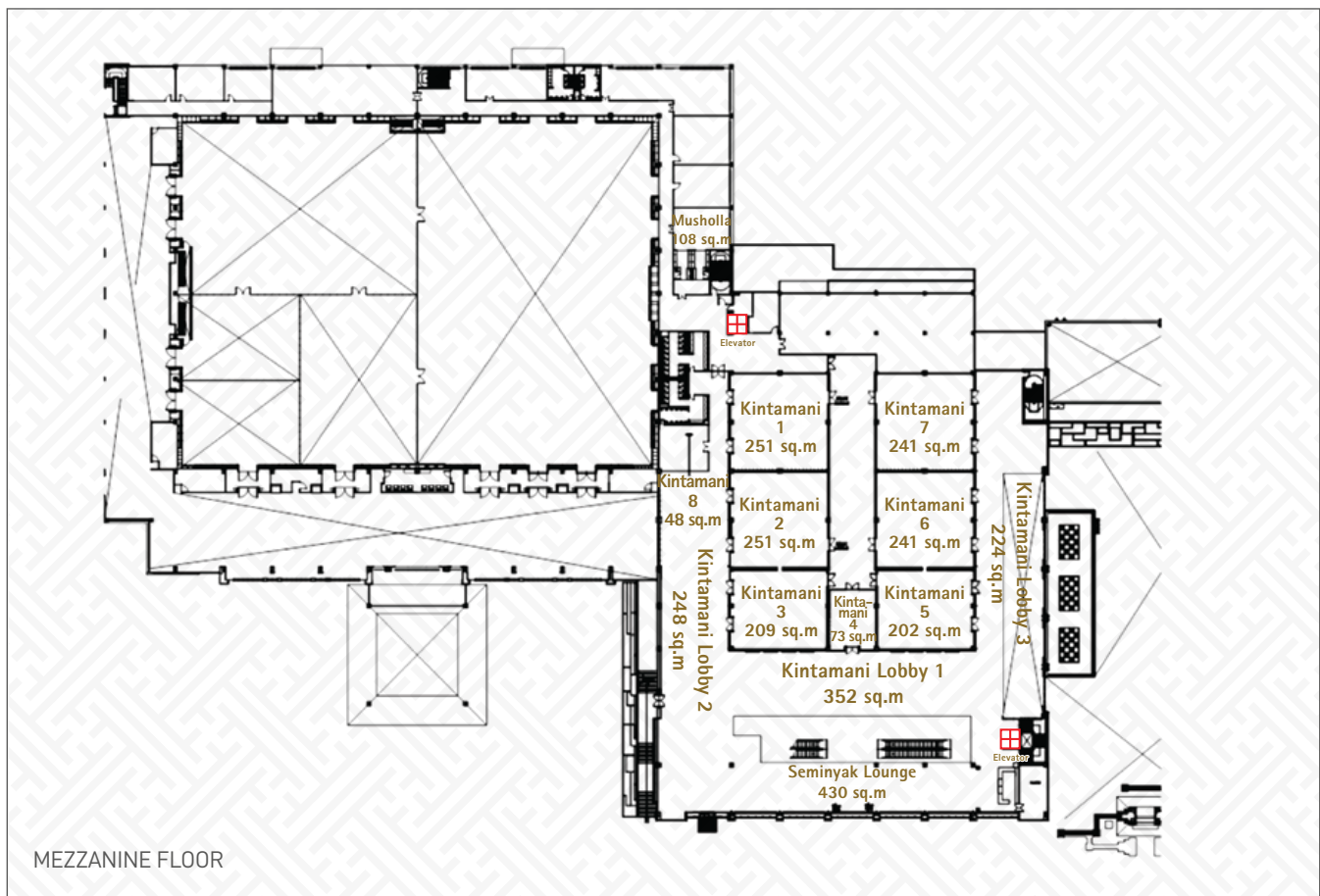


## BNDCC Location



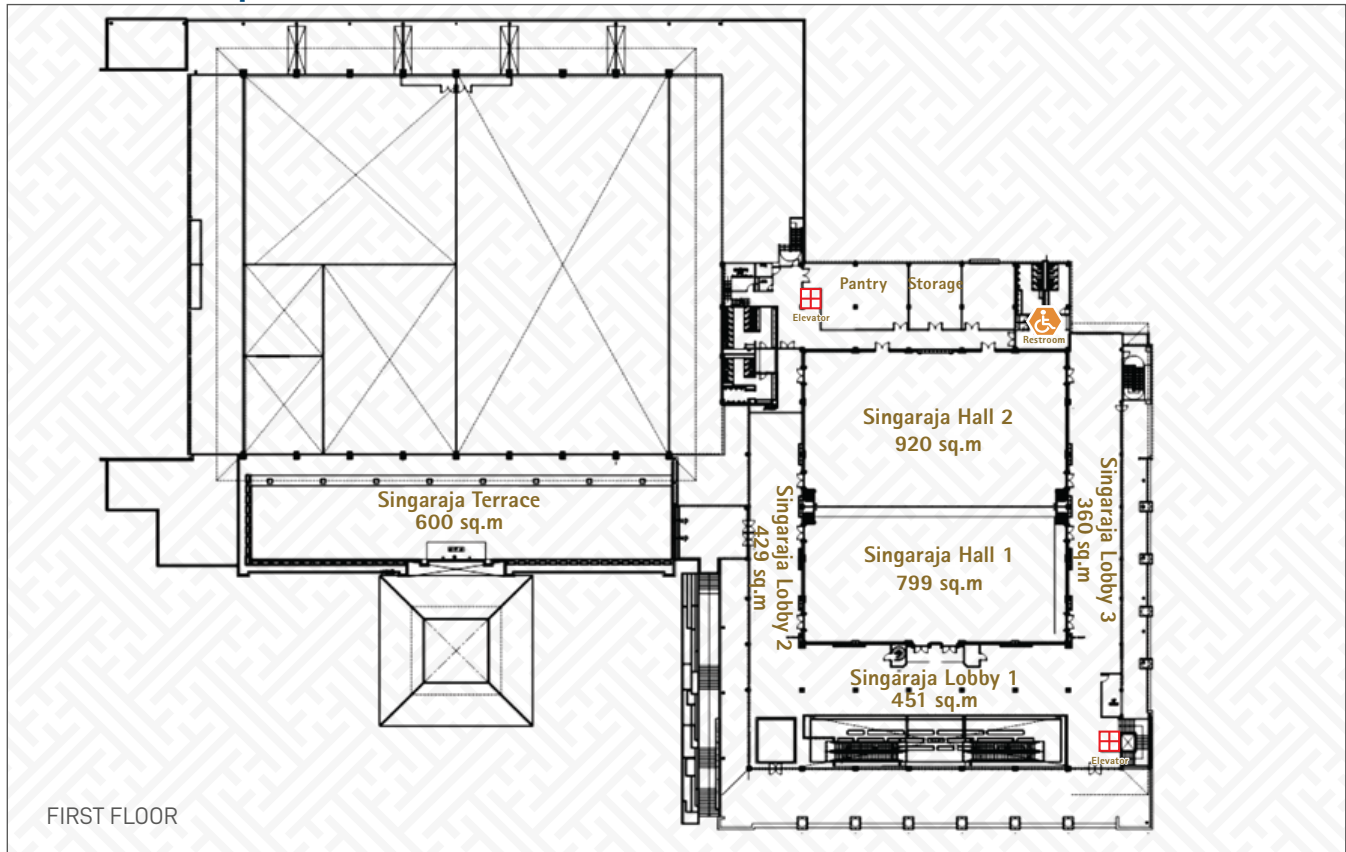


## BNDCC 1 Floor plans

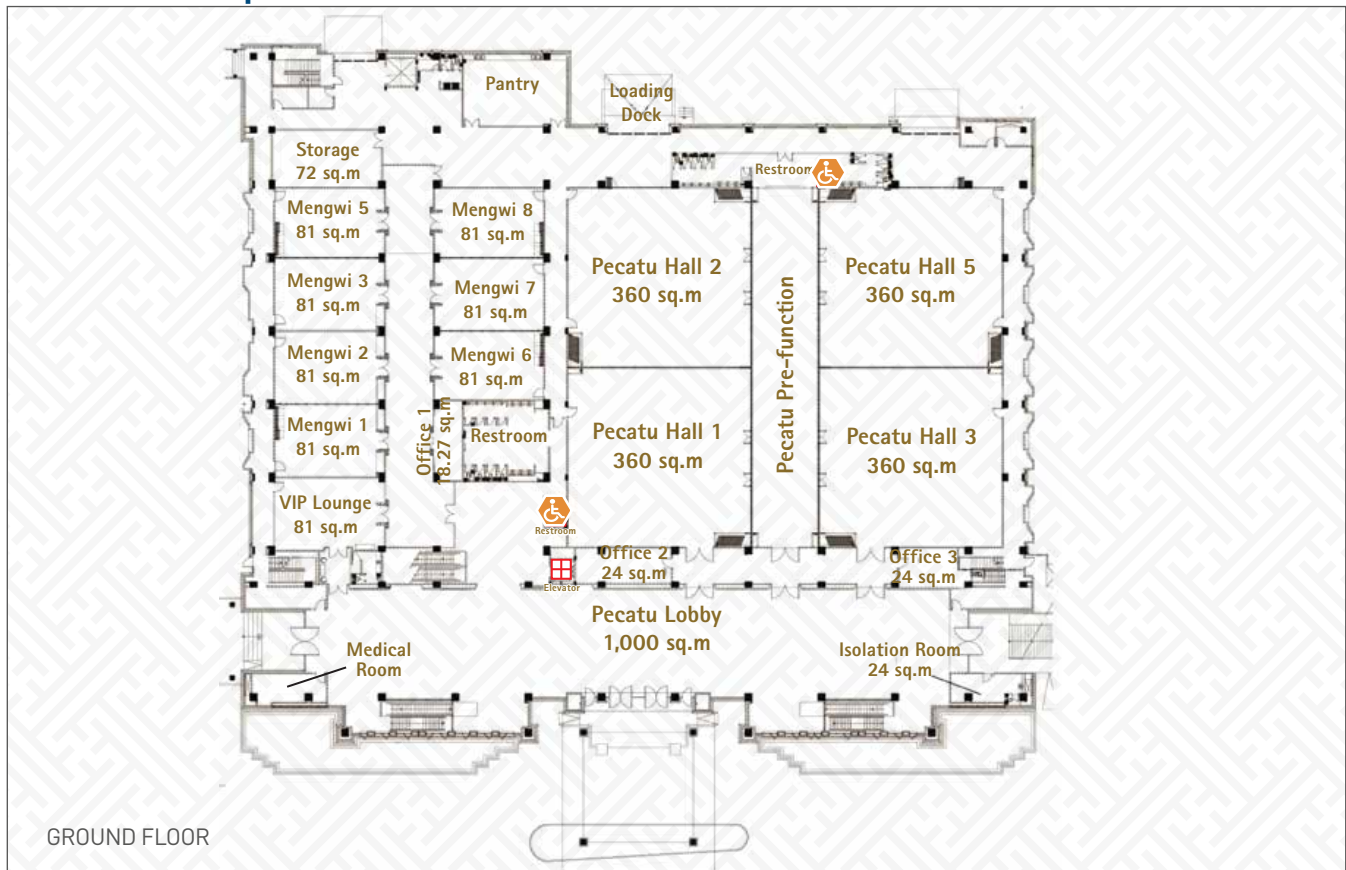




## BNDCC 1 Floor plans

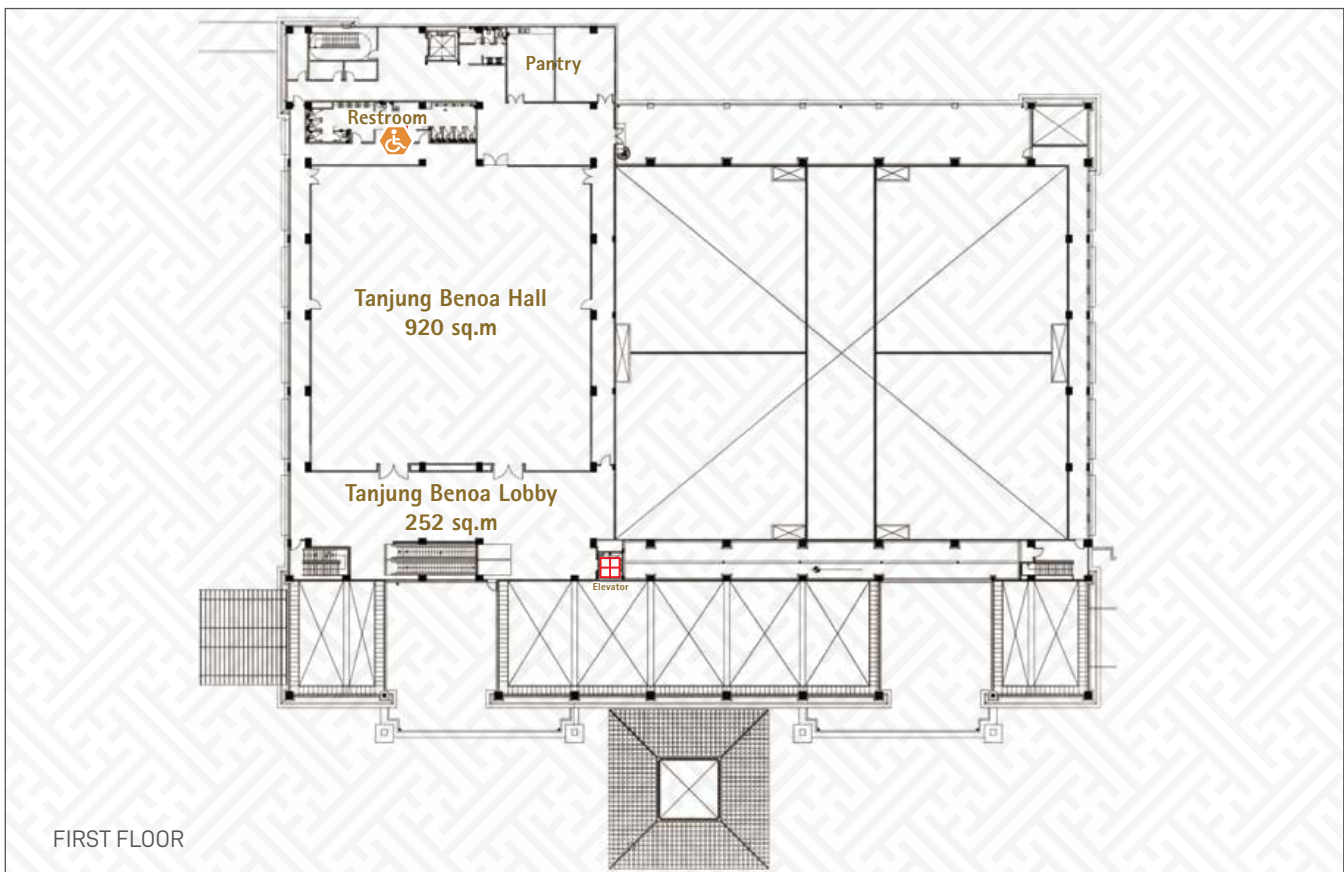
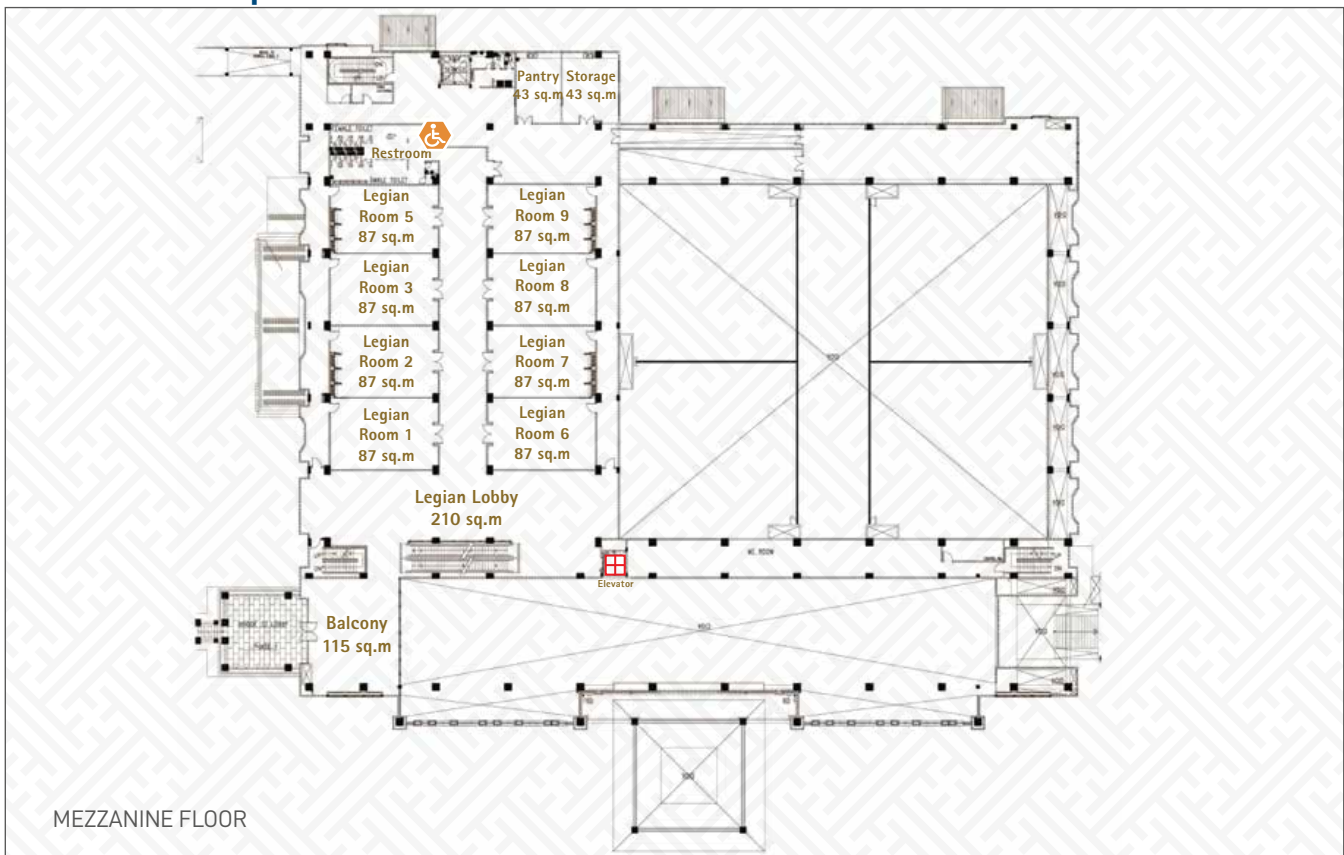


## BNDCC 2 Floor plans





## BNDCC 2 Floor plans





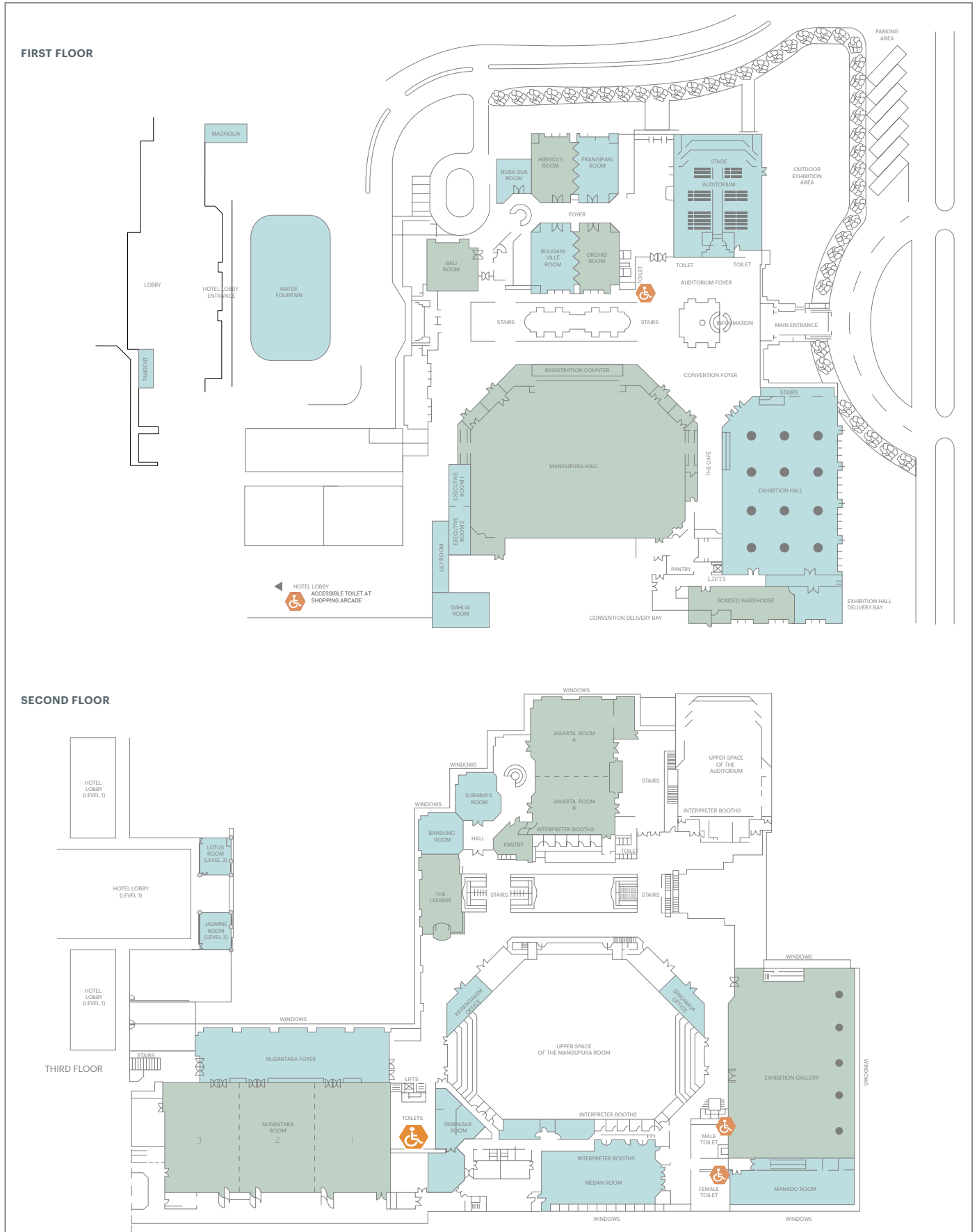
## BICC Location







## BICC Floor Plans





# Accreditation, registration, and badging

## Online registration

GP2022 invites all stakeholders of the Sendai Framework and Disaster Risk Reduction agenda to register, including: Member States, parliamentarians, local governments, United Nations system entities, intergovernmental organizations, major groups and other stakeholder groups. Access to the venues will only be granted to registered and confirmed participants.

Please register online through <https://globalplatform.undrr.org/>.

Once registered the UNDRR team will review and confirm participation. Please note the review process may take up to four weeks.

## Conference badges

Approved participants will be invited to pick up their conference badge at the on-site registration area located at the Bali International Convention Centre by presenting their registration confirmation form with the QR code (paper or electronic version) together with their valid national passport.

The on-site registration area will be open from 21 May 2022 to 27 May 2022. The opening hours for the registration area are as follows:

Saturday 21 May:	08:00 - 17:00
Sunday 22 May:	08:00 - 17:00
Monday 23 May:	07:00 - 19:00
Tuesday 24 May:	07:00 - 19:00
Wednesday 25 May:	07:00 - 19:00
Thursday 26 May:	08:00 - 17:00
Friday 27 May:	08:00 - 12:00

In order to reduce queue waiting times, participants are highly encouraged to pick up their conference badge prior to 23 May 2022.

As part of the security arrangements, all participants are also required to kindly present their registration form together with their national passport at the entrance of the Bali International Convention Centre before proceeding to the registration area for the first time.

## Media accreditation

Media accreditation will open in December 2021. Only confirmed members of the press will receive media accreditation. Prepare to submit one of the following to support your application:

1. A letter of engagement from a certified media house;
2. A membership card from a national journalist or media union;

or

3. Three (3) examples of articles, stories, radio or video coverage from within the last twelve (12) months.

Full details will be available on <https://globalplatform.undrr.org/press-service>.

## Fees

No conference fees will be charged. Participants are required to cover their own accommodation and travel expenses, as well as health/travel insurance and other incidentals.

## Visas

Visa requirements must be met before arrival to Indonesia. Acknowledging developments related to the COVID-19 pandemic in Indonesia, information about visas will be updated periodically by the Government of Indonesia. The visa policy in Indonesia adapts to the development of guidelines for handling the COVID-19 pandemic. Please visit Indonesia's Immigration website, at [www.bnpb.go.id/gpdr](http://www.bnpb.go.id/gpdr). For the complete regulations, please also visit [www.covid19.go.id](http://www.covid19.go.id) and [www.kemkes.go.id](http://www.kemkes.go.id).

## Security

Security in the conference venues of the GP2022 is the responsibility of the United Nations. Outside these premises, all external security related issues are the responsibility of the host country, Indonesia.

As part of the security arrangements, all persons, and their personal items (bags/luggage) will be screened at the entrance to both conference facilities.

Admission to the conference sites will require the presentation of a valid conference badge. For identification and security reasons, all participants are required to wear their badge visibly at all times during meetings, social functions, and throughout the conference venues. The loss of a conference badge should be immediately communicated to the UNDSS Security Operations Centre at the Bali Nusa Dua Convention Center.

All high-level participants should alert their respective embassies for arrangements regarding security, transport, accommodation, and other protocol matters. The Permanent Mission of Indonesia to the United Nations in Geneva and the Protocol Office of the Global Platform for Disaster Risk Reduction must be kept informed of the anticipated arrival of all Heads of State, including dates of arrival. All access requirements for visiting security details must be coordinated with the United Nations Department of Safety and Security.



# Transportation and accommodation

You can get around Bali using various modes of transportation. Buses and taxis are available in the central tourist locations.

## Access from the airport

Participants are advised to make use of the following options:

- Official shuttle provided by the Host Committee to the official hotels.
- Direct arrangement with each hotel.
- Taxi and online taxi.
- Bali Access Travel: <http://www.baliaccesstravel.com/transport.html> Cost of transportation is about Rp. 470,000 (USD 33).
- Car rental service.

## Taxis

- A one-way fare from the Airport to the Nusa Dua area should cost around Rp 100,000 – Rp 150,000 (USD 8 – 12).
- From the official hotels to the venues should cost around Rp. 15,000 – Rp. 40,000 (USD 2 – 4).

- Online taxi: GO-JEK and GRAB. Online taxi app needs to be downloaded via GPlay for IStore in advance. Registration is required in the app.

## Parking

Both venues provide large parking lots for cars and buses on-site.

## Accommodation

Participants are required to arrange their own accommodation for their stay in Bali. The host country has selected several hotels close to the venues as the official hotels. A shuttle bus will operate on a fixed schedule between the conference venues and official hotels throughout the duration of the conference. For additional information, please consult the weblink: <https://www.bnpb.go.id/health-protocol-for-foreign-participants>.





# Programme at a glance

The Agenda will feature a range of activities, including Opening and Closing sessions, High-Level Dialogues, Ministerial Roundtables, Thematic Sessions, Official Statements, Midterm Review Plenaries, Side Events, an Innovation Platform, the Ignite Stage, Learning Labs, and field visits.

## Official Programme

### High-Level Dialogues

The four High-Level Dialogues present an opportunity for representatives from governments, international organizations, and other stakeholder groups to share experiences and discuss strategies for accelerating the implementation of the Sendai Framework.

### Ministerial Roundtables

Ministerial Roundtables provide an opportunity to share experiences, identify solutions and enhance political leadership and commitments for the implementation of the Sendai Framework. Roundtables are organized by invitation only at the ministerial level. More information on the process and format of participating in the Ministerial Roundtables will be separately communicated to Member States through official channels.

### Thematic Sessions

The Thematic Sessions gather senior representatives and experts from governments, United Nations, technical and scientific institutions, civil society, the private sector and other stakeholder groups for interactive and substantive discussions on required measures to accelerate the implementation of key aspects of disaster risk reduction.

### Official statements

Member States and representatives of stakeholder groups, such as the United Nations, international or regional organizations, are invited to provide prerecorded or written statements focusing on progress made in disaster risk reduction and best practices of the country or the organization they represent. More information on the format and the process of submitting statements will be

made available on the GP2022 Website: <https://globalplatform.undrr.org/>.

### Midterm Review Plenaries

The Midterm Review Plenaries form a central part of the consultations of the Midterm Review of the Implementation of the Sendai Framework for Disaster Risk Reduction, which will conclude in 2023 prior to the High-Level Political Forum on Sustainable Development and the Sustainable Development Goals Summit.

To learn more about the Official Programme sessions, explore the Agenda: <https://globalplatform.undrr.org/programme/agenda>.





## Informal Programme

### Side Events

Side Events allow different stakeholders and participants to present their work in support of the outcomes of GP2022, raise awareness on disaster risk reduction activities, and contribute to the promotion and exchange of knowledge.

### Innovation Platform

The Innovation Platform is a space where GP2022 participants showcase applications and technologies for new and innovative approaches to disaster risk reduction, innovative educational activities, and more.

### Ignite Stage

The Ignite Stage comprises Ted Talk style speeches in which pre-selected participants present a disaster risk reduction topic, project, or initiative. Its goal is to expand the variety of topics discussed around disaster risk reduction at GP2022.

### Learning Labs

Learning Labs are group interactive sessions that provide space for peer-to-peer learning on specific topics. Innovative approaches

to disaster risk reduction, concepts and tools are presented and explained so that participants can try them on the spot.

### Field Visits

A series of field visits is planned for in-person participants. Participants will receive a first-hand look at disaster risk reduction practices in place in Bali, Indonesia. More information on the field visits will be available as planning progresses.

To learn more about the Informal Programme sessions, explore the **Agenda**: <https://globalplatform.undrr.org/programme/agenda>.

## Preparatory days

The Preparatory Days form an integral part of GP2022 and take place on 23 and 24 May 2022. During the Preparatory days, stakeholder groups and partners organize preparatory events in the lead up to the official programme. Additional information on the Preparatory Days sessions can be found on the GP2022 Website: <https://globalplatform.undrr.org/programme/preparatory-days>.





# Practical information

## Bilateral meeting rooms

A limited number of rooms will be dedicated to bilateral high-level meetings / closed meetings. Bilateral meetings will be held from 25 to 27 May 2022, and can be reserved for 20 minutes only, according to availability of rooms and on a “first come, first served” basis. Requests for bilateral meeting rooms will be opened from 01 April 2022 and can be addressed to Mr. Ricardo Freitas Rodrigues: [gp-bilaterals@un.org](mailto:gp-bilaterals@un.org) indicating the subject line “GP2022 bilateral meeting request”.

## Interpretation

Opening and Closing Ceremonies, High-Level Dialogues, Thematic Sessions, Midterm Review Plenaries, and the Ministerial Roundtables will be interpreted in the six United Nations official languages, namely Arabic, Chinese, English, French, Russian and Spanish. International Sign Interpretation and Real-Time Captioning will also be provided in the above-mentioned sessions.

## Internet

Free Wi-Fi is available in all meeting rooms.

## Banking facilities

Standard banking hours are from 08:00 to 15:00, from Monday to Friday. However, several banks open their branches in hotels (and some in malls) longer than regular office hours. A few are open on Saturdays as well. Information on daily exchange rates can be found in newspapers or from the internet. Some Indonesian banks provide this on their websites.

## Accessibility

UNDRR and the host country are committed to making the GP2022 accessible to persons with disabilities.

### International Sign Interpretation and Real Time Captioning:

Given the mandate to support the Sendai Framework implementation and commitment to ensure a disability-inclusive approach to disaster risk reduction, Real Time Captioning and International Sign interpreters will support the official programme by ensuring the meaningful and active participation of persons with disabilities in the GP2022 procedures and proceedings.

Please consult the detailed session information on the availability of international sign interpretation and availability of real time captioning.

For any additional questions on accessibility please contact Ms. Stefanie Dannenmann-Di Palma, UNDRR Accessibility focal point, at [dannenmann@un.org](mailto:dannenmann@un.org).

## Sustainability

UNDRR and the Government of Indonesia aspire to organize a sustainable GP2022, that will minimize negative environmental impacts and provide benefits to local hosts and communities.

For additional details, please refer to the sustainability page of the GP2022 website, which will feature the GP2022 environmental policy as well as the Sustainable GP2022 Participants Guide.





# About Bali

## Travel Advisory

Travel Advisory will be made available on the website in early 2022, due to the dynamic and rapidly evolving pandemic situation.

## Health and Vaccination

Health and Vaccination requirements will be made available on the website in early 2022, due to the dynamic and rapidly evolving pandemic situation.

## Foreign currency declaration

Foreign currency amounts exceeding the equivalent of IDR 100,000,000 must be declared. Foreign currency amounts exceeding IDR 1,000,000,000 or equivalent are prohibited.

## Geography

Indonesia is a vast equatorial archipelago of 17,000 islands extending 5,150 kilometres (3,200 miles) east to west, between the Indian and Pacific Oceans in Southeast Asia. The largest islands are Sumatra, Java, Kalimantan (Indonesian Borneo), Sulawesi, and the Indonesian part of New Guinea (known as Papua or Irian Jaya). Islands are mountainous with dense rain forests, and some have active volcanoes. Most of the smaller islands belong to larger groups, like the Moluccas (Spice Islands).

## Climate

The climate of Indonesia is almost entirely tropical. The uniformly warm waters that make up 81% of Indonesia's area ensures that temperatures on land remain fairly constant, with the coastal plains averaging 28 °C, the inland and mountain areas averaging 26 °C, and the higher mountain regions, 23 °C. Temperature varies little from season to season, and Indonesia experiences relatively little change in the length of daylight hours from one season to the next.

## Language

Bahasa Indonesia is the national and official language of Indonesia and is used in the entire country. It is the language of official communication, taught in schools and used for broadcast in electronic and digital media. Most Indonesians also have their own ethnic language and dialect. In the province of Bali, Balinese is most locals' first language.

## Time

The local time in Bali is eight (8) hours ahead of UTC (UTC+08.00). It is within WITA, the Indonesia Central Time Zone. Bali has only one time zone.

## Currency

The official currency of Indonesia is the Indonesian Rupiah (IDR). Currency exchange is available at local banks and money changers, that are widely available in the airport and the area. Credit cards are widely accepted in hotels, large restaurants, and large stores.

## Electricity

Electric power supply is 220 volts in all regions in Indonesia. The sockets will only fit with two pins rounded-tip plugs (technically known as Type C, E, and F) or with adaptors.

## Telephone area code

The international country code for Indonesia is +62. The area code for Bali is 361.

You can also follow the conversation on Twitter:



[@UNDRR](https://twitter.com/UNDRR)

[#RisktoResilience](https://twitter.com/hashtag/RisktoResilience)

[#GPDRR2022](https://twitter.com/hashtag/GPDRR2022)



© 2021 UNITED NATIONS OFFICE  
FOR DISASTER RISK REDUCTION

For additional information, please  
visit:

[globalplatform.undrr.org](https://globalplatform.undrr.org)

[undrr.org](https://undrr.org)

[preventionweb.net](https://preventionweb.net)

Convened and organized by



**UNDRR**

UN Office for Disaster Risk Reduction

Hosted by the Government  
of Indonesia

